



STH 32 (SHERIDAN RD)  
ILLINOIS STATE LINE TO 91ST ST

# PROJECT BRIEF

JUNE 2023

## WIS 32 (Sheridan Road) to Close Long-Term

The Wisconsin Department of Transportation (WisDOT) is underway with the WIS 32 (Sheridan Road) resurfacing project between 91st Street and the Illinois State Line. The project began in early June and is scheduled for completion late this fall. The following work is scheduled to take place as part of this project:

### WEDNESDAY, JULY 5, 2023:

- WIS 32 (Sheridan Road), between WIS 165 (104th Street) and 91st Street, is scheduled to close to traffic long-term beginning Wednesday, July 5, by end of day. WIS 32 (Sheridan Road) will remain closed until this fall while crews work to replace the box culvert at Barnes Creek.

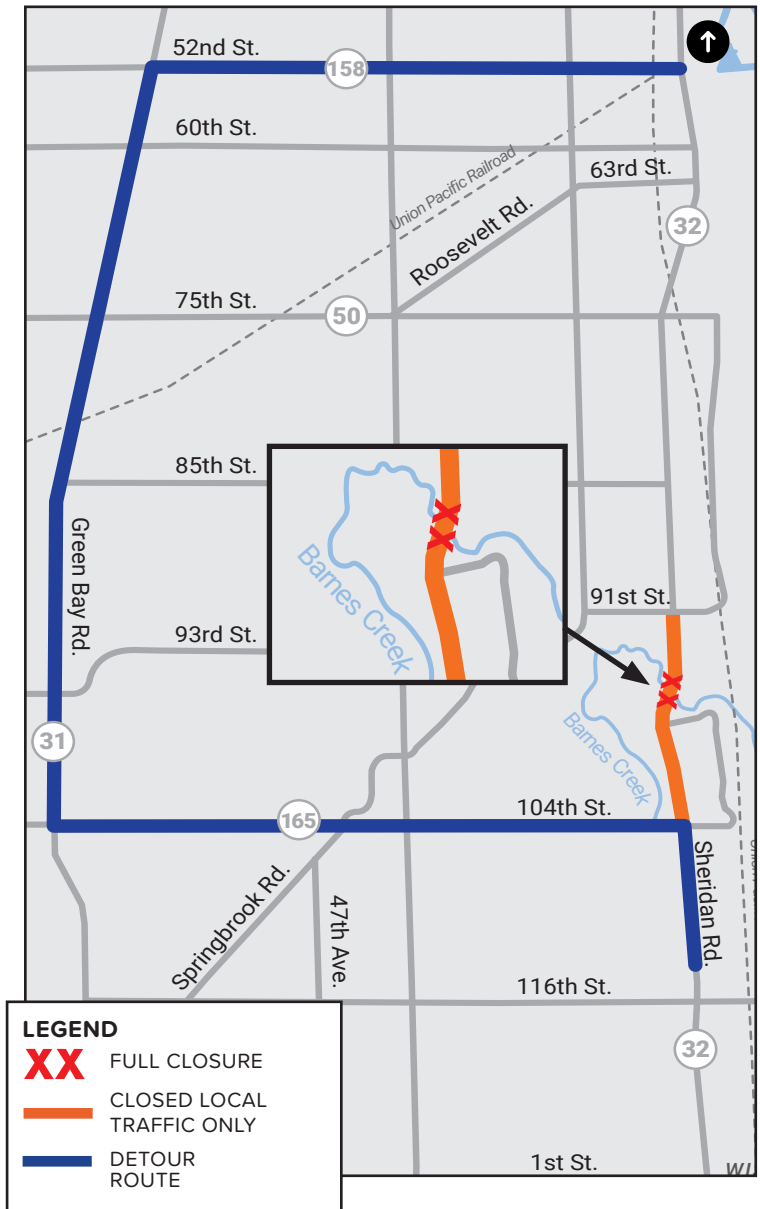
**Access to businesses and residents will be maintained during construction.**

### DETOUR ROUTE:

- Motorists are encouraged to use WIS 158 (52nd Street), WIS 31 (Green Bay Road), WIS 165 (104th Street), and WIS 32 (Sheridan Road) to get around the closure.

The best way to stay involved with the project is to sign up for our project update emails.

Please email your contact information to the project's public involvement specialist Athena Kuhl at [akuhl@kapurinc.com](mailto:akuhl@kapurinc.com) to be added to our distribution list.



### PROJECT CONTACT:

Athena Kuhl, Public Involvement Specialist  
Cell: (414) 215-0379 • Email: [akuhl@kapurinc.com](mailto:akuhl@kapurinc.com)

### VISIT PROJECT WEBSITE:

<https://projects.511wi.gov/32rac/>

